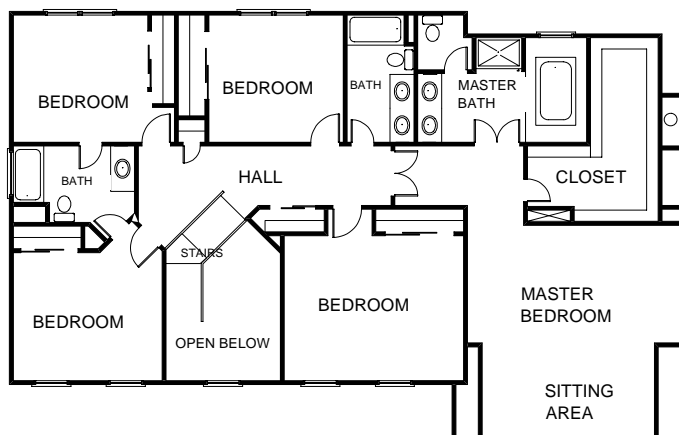
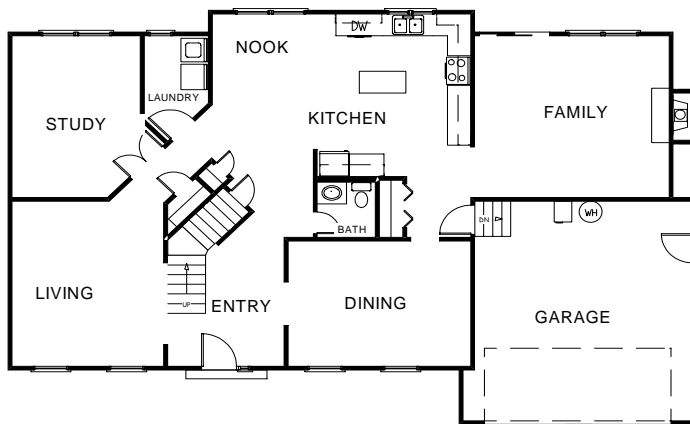


# OPAL II



- 5 BEDROOMS
- 3.5 BATHS, INCLUDING MASTER SUITE LUXURY BATH
- KITCHEN WITH CENTER ISLAND AND BREAKFAST NOOK
- FAMILY ROOM & STUDY
- LIVING ROOM & DINING ROOM
- LAUNDRY ROOM
- AVAILABLE ON CRAWL SPACE FOUNDATION ONLY
- 3,359 SQUARE FEET OF LIVING AREA



[NewHomesVEI.com](http://NewHomesVEI.com)

ARTIST RENDERING/PHOTO AND FLOOR PLAN LAYOUT ARE FOR ILLUSTRATION PURPOSES ONLY. DETAILS ARE SUBJECT TO CHANGE.