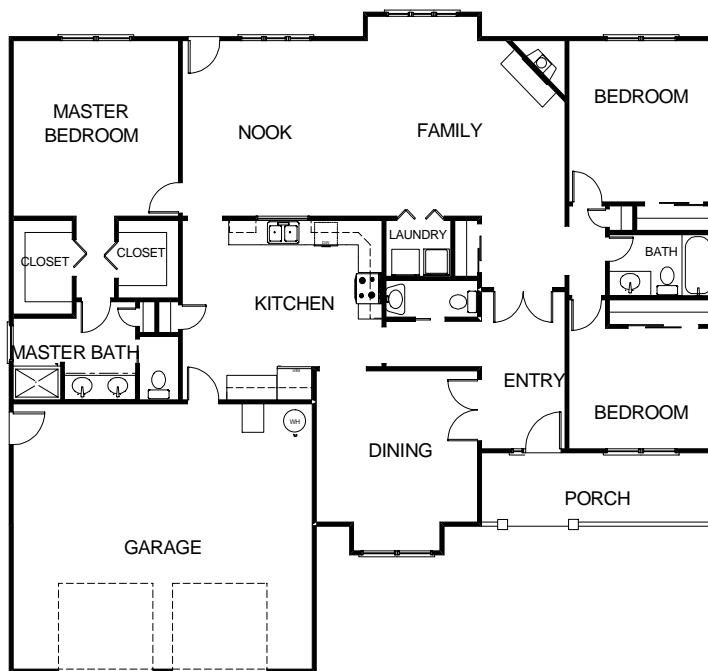


POTOMAC



- 3 BEDROOMS
- 2.5 BATHS INCLUDING MASTER SUITE BATH
- KITCHEN WITH BREAKFAST NOOK
- DINING ROOM
- FAMILY ROOM
- LAUNDRY CLOSET
- 2,053 SQUARE FEET OF LIVING AREA



NewHomesVEI.com

ARTIST RENDERING/PHOTO AND FLOOR PLAN LAYOUT ARE FOR ILLUSTRATION PURPOSES ONLY. DETAILS ARE SUBJECT TO CHANGE.