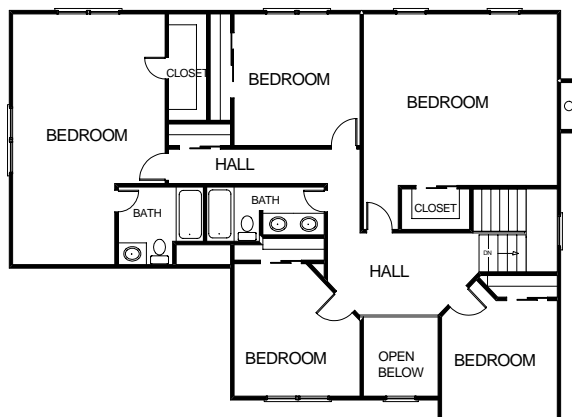
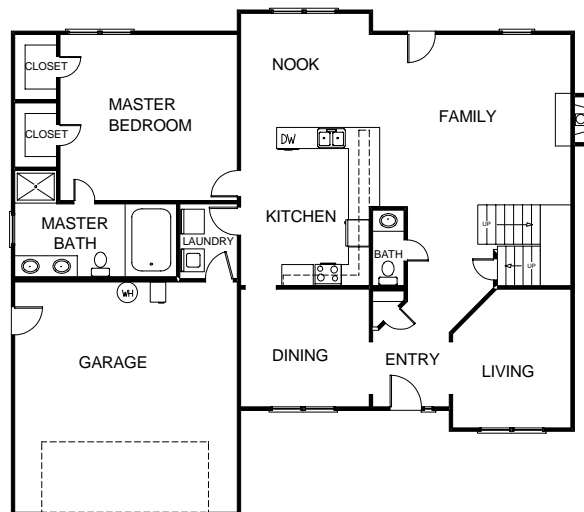


TOPAZ



- 6 BEDROOMS, INCLUDING FIRST AND SECOND FLOOR MASTER SUITES
- 3.5 BATHS, INCLUDING FIRST FLOOR MASTER SUITE LUXURY BATH
- KITCHEN WITH BREAKFAST BAR AND NOOK
- FAMILY ROOM
- LIVING ROOM & DINING ROOM
- LAUNDRY ROOM
- 3,249 SQUARE FEET OF LIVING AREA



NewHomesVEI.com

ARTIST RENDERING/PHOTO AND FLOOR PLAN LAYOUT ARE FOR ILLUSTRATION PURPOSES ONLY. DETAILS ARE SUBJECT TO CHANGE.